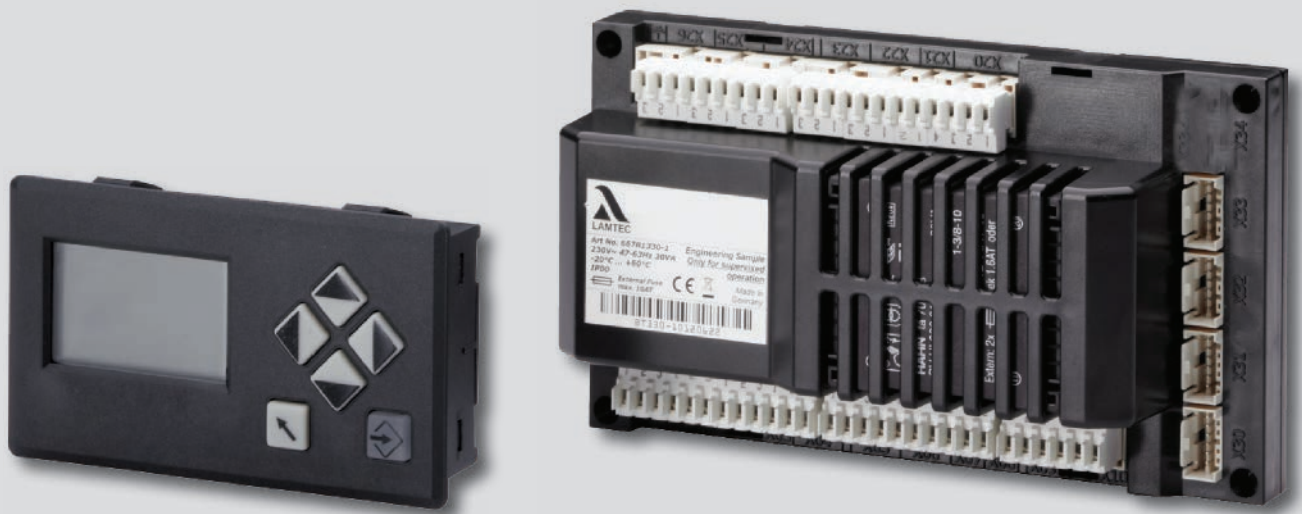
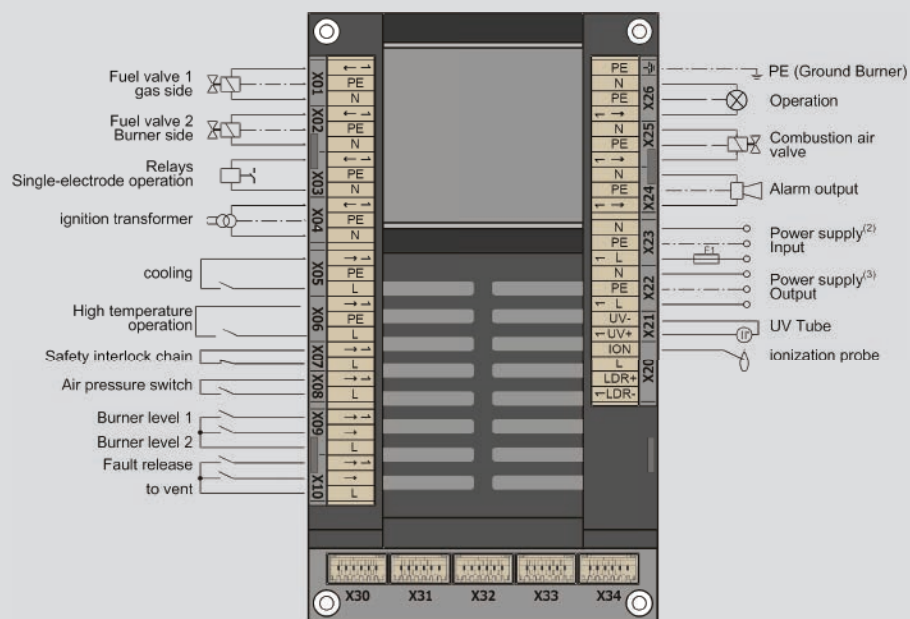


# BC300 Burner Sequencer for Industrial Burners in Thermal Process Plants

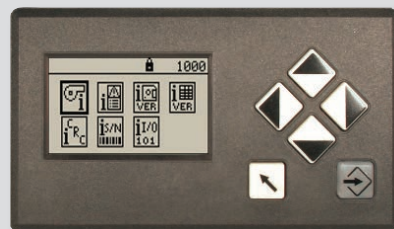
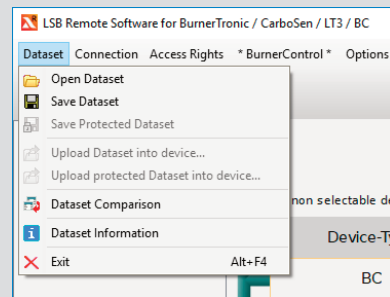


## Functional Description

The BC300 is a burner sequencer for industrial burners on thermal process plants. It is designed for use on burners of all sizes in intermittent and continuous operation. The control output can be single stage or two stage, with pneumatic modulation or in cycle operation. The flame can be monitored either with ionisation in single electrode or twin electrode operation, UV tube or F152 with FFS07 or FFS08 optical sensors. The BC300 is also suitable for applications with process temperatures higher than 750 °C. The UI300 user interface can be used to monitor the status of the burner at distance and in low light levels. Intuitive graphics and symbols are used to make the UI300 language neutral and easy to understand. Changes to the settings can be modified on-site with the LSB Remote Software. For error diagnostics, the last 10 faults are saved to the device. A comprehensive list of approvals ensures that the BC300 is suitable for worldwide use.



# Basic Unit / Components and Approvals



Burner Control BC300, User Interface UI300, EBM112 Module and LSB Remote Software



**EC Type Examination Certificate (Module B)**  
according to Directive 2014/68/EU

- DIN EN 298
- DIN EN 13611
- DIN EN 50156-1
- DIN EN 50156-2



SIL3

- DIN EN 61508 Teil 1-7



**EC Type Examination Certificate**

- 2016/426/EC
- DIN EN 298
- DIN EN 13611

**LAMTEC Meß- und Regeltechnik**  
**für Feuerungen GmbH & Co. KG**

Wiesenstraße 6  
D-69190 Walldorf  
Telefon: +49 (0) 6227 6052-0  
Telefax: +49 (0) 6227 6052-57

[info@lamtec.de](mailto:info@lamtec.de)  
[www.lamtec.de](http://www.lamtec.de)

